



Apartment (EPC Rating: C)

**FLAT 1, 14 ST. JOHNS SQUARE, WAKEFIELD,
WFI 2RA**
Per month

£1,100 Per



2 Bedroom Apartment located in Wakefield

This spacious, unfurnished, pet friendly apartment is part of a Grade II listed Georgian townhouse. It offers a private entrance, a spacious feel, a courtyard garden, private parking in the prestigious St. John's Square.

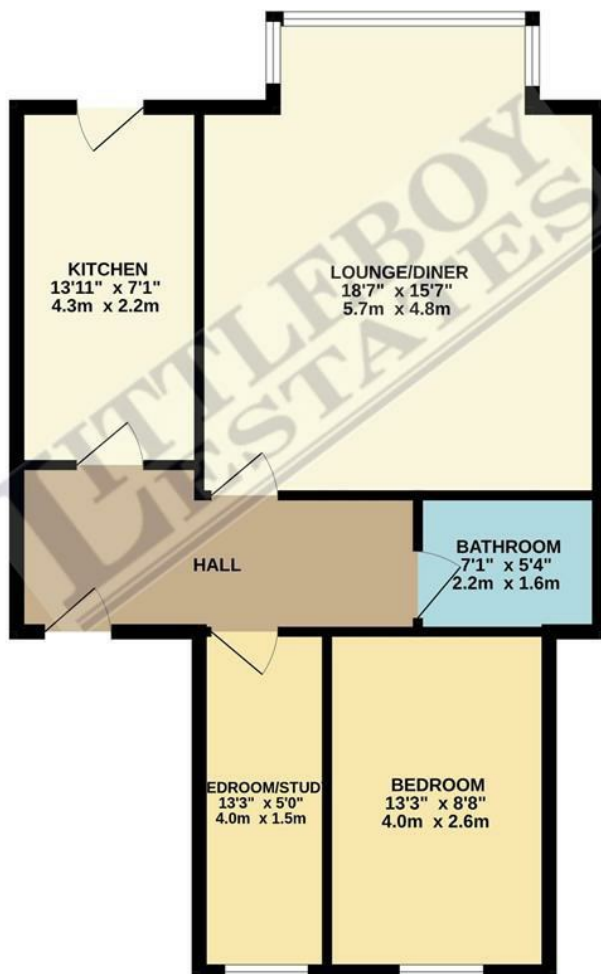
The property features a vaulted galley kitchen, fully equipped with modern appliances, including an integrated fridge, freezer, dishwasher, and washing machine. The kitchen boasts a tiled floor, laminated worktop, and contemporary units, providing ample space for cooking enthusiasts. Gas central heating, induction hob and electric oven.

The bathroom is finished with floor and wall tiling, providing a modern touch. The master bedroom and second bedroom are located at the back of the property, offering quiet living and privacy with views of the back garden.

Located in one of the most desirable areas in Wakefield, it overlooks the renowned Georgian St. John's Church and is within walking distance of Wakefield City Centre and Wakefield Westgate Train Station. The area is home to esteemed schools and offers excellent access to the motorway network. On street permit parking outside the property.



GROUND FLOOR
680 sq.ft. (63.2 sq.m.) approx.



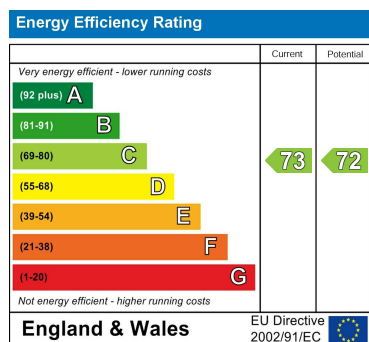
TOTAL FLOOR AREA: 680 sq.ft. (63.2 sq.m.) approx.

Whilst every attempt has been made to ensure the accuracy of the floorplan contained here, measurements of doors, windows, rooms and any other items are approximate and no responsibility is taken for any error, omission or mis-statement. This plan is for illustrative purposes only and should be used as such by any prospective purchaser. The services, systems and appliances shown have not been tested and no guarantee as to their operability or efficiency can be given.
Made with Metropix ©2024

Council Tax Band

C

Energy Performance Graph



Call us on

0800 7720 789

hello@littleboyestates.co.uk

littleboyestates.co.uk

Agents Note: Whilst every care has been taken to prepare these particulars, they are for guidance purposes only. All measurements are approximate and are for general guidance purposes only and whilst every care has been taken to ensure their accuracy, they should not be relied upon and potential buyers are advised to recheck the measurements.

